

PSL Windows Cisco Vpn Client install

SEE PAGE 7 FOR
MAC
INSTRUCTIONS

Information you will need for this install.

Your Windows/PC Username

Your Windows /PC Password

Your Work computer's Number PXXX

The name of the PSL vpn server: **pslvpn.polarsemi.com**

IS group, must have already enable your VPN access (if you had it before your good)

open Internet Explorer or Edge Browser and

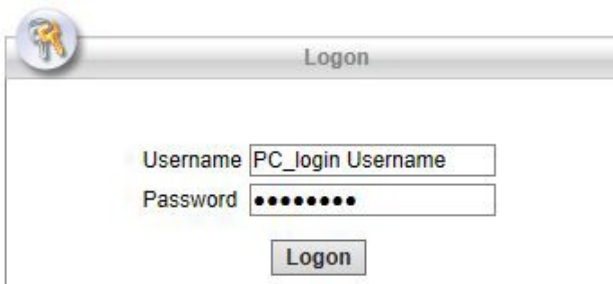
Enter URL **https://pslvpn.polarsemi.com (THIS MUST BE https:)**



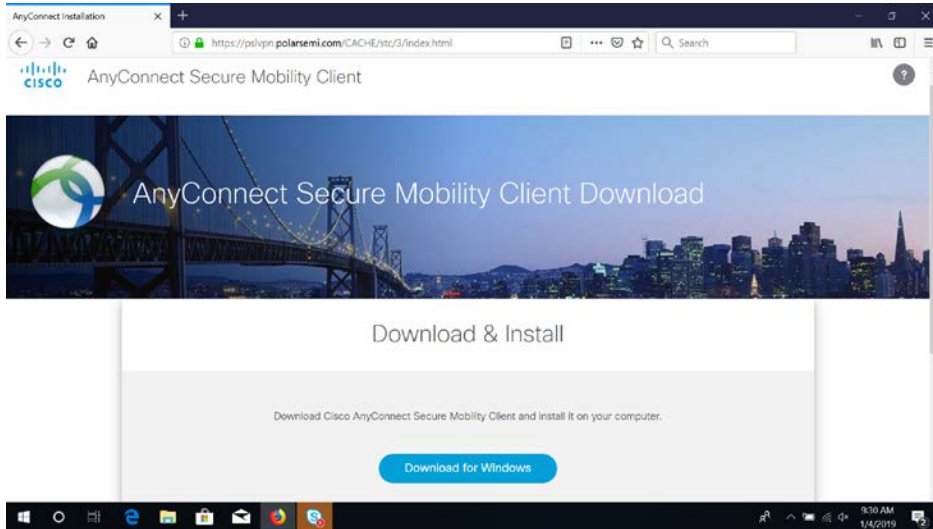
A Logon box is now displayed

A screenshot of a web-based logon form. The form has a title bar that says "Logon". Below the title bar, there are two input fields: "Username" and "Password". Below the "Password" field is a button labeled "Logon".

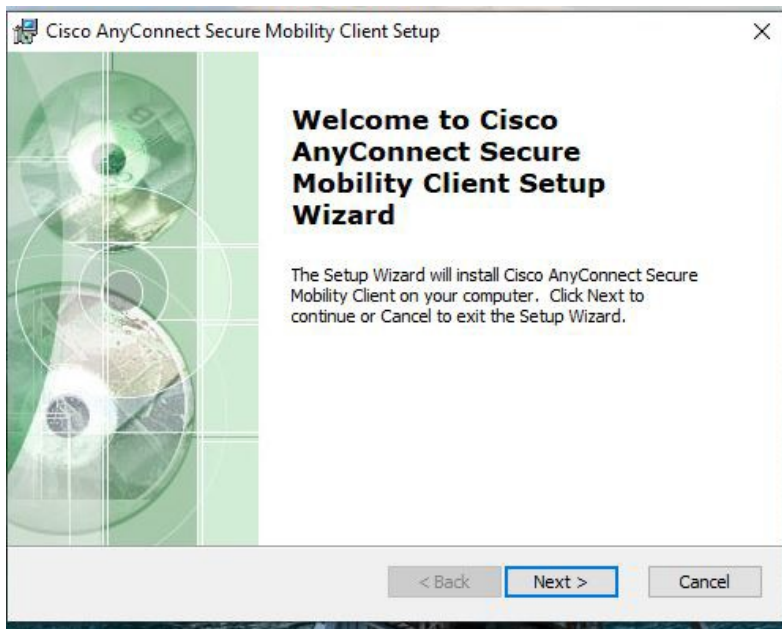
The PSL Cisco Firewall- login will ask you for your PC username and Password, then click Logon

A screenshot of a web-based logon form. The form has a title bar that says "Logon". Below the title bar, there are two input fields: "Username" and "Password". The "Username" field contains the text "PC_login Username". The "Password" field is filled with dots. Below the "Password" field is a button labeled "Logon".

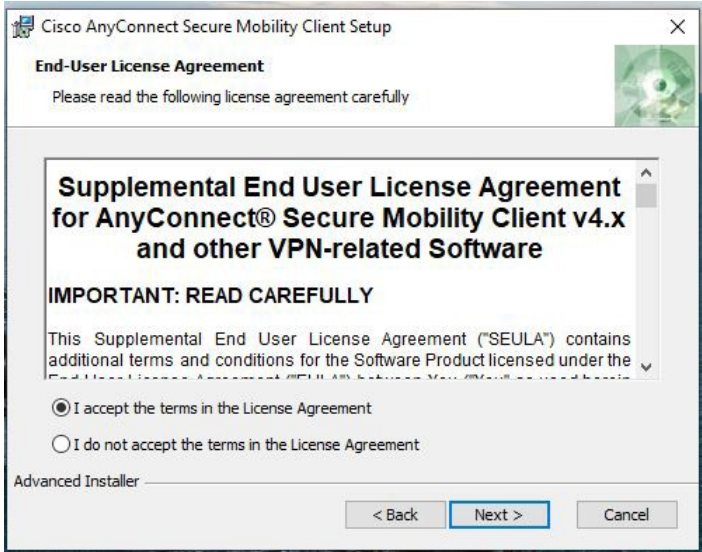
Double click on the Download for Windows link and save to your desktop



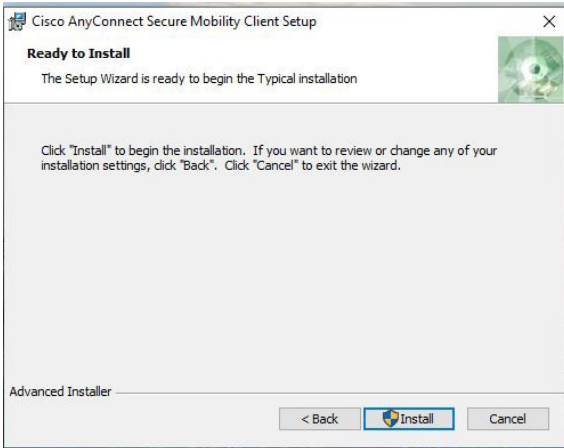
Click on Run and the Following will start the VPN setup. Click Next



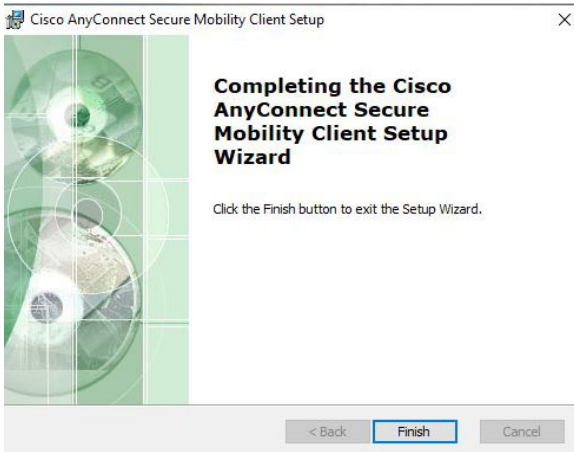
Click I accept the terms and Click Next



Click the Install (on some systems an Addition UAC pop up happens) click yes

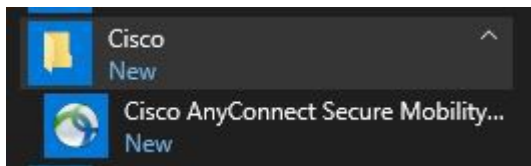


Click Finish

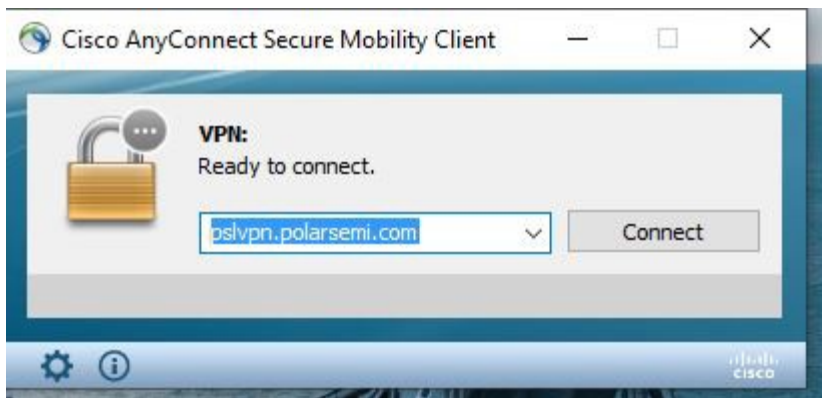


TO run the Cisco AnyConnect client look under your Start Menu under the folder Cisco

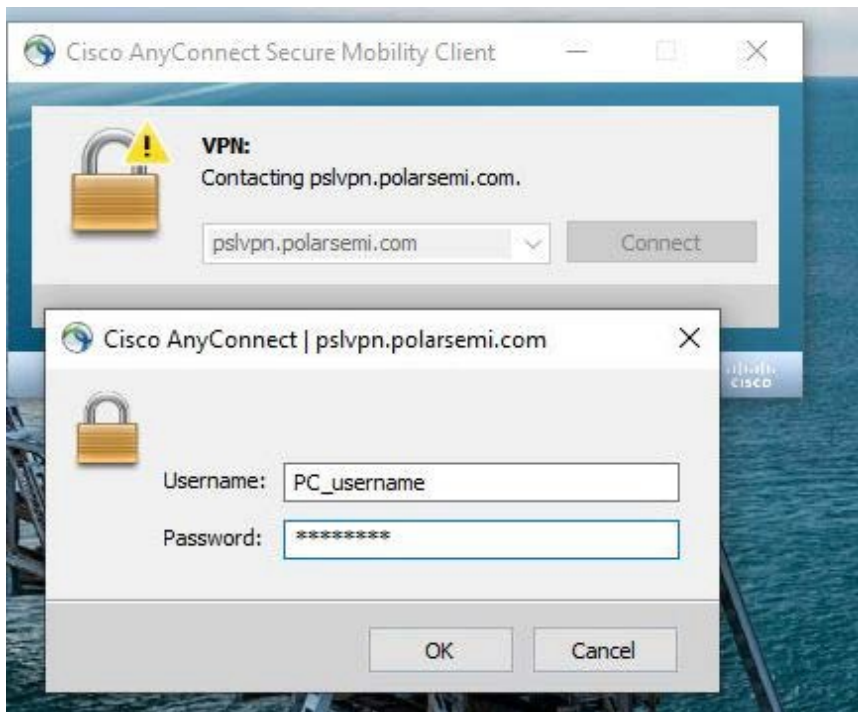
Click on the Cisco Any Connect Secure icon to open it



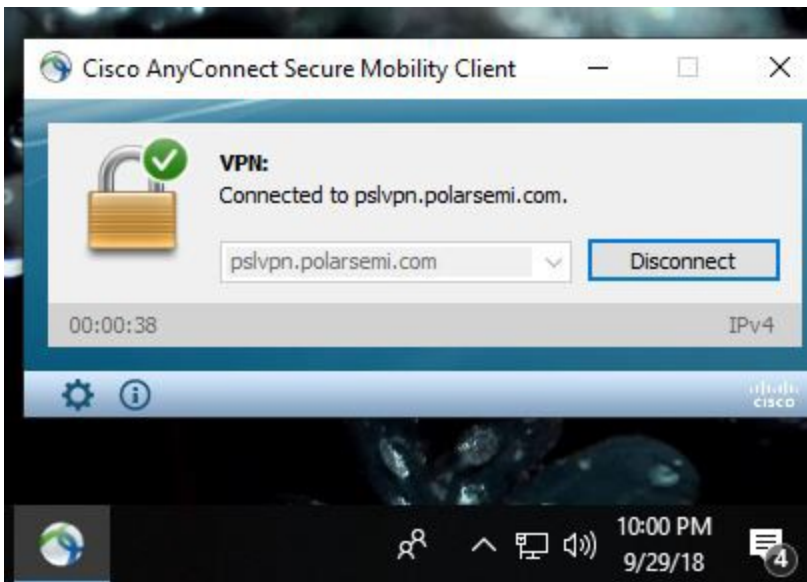
If the box does not already have it enter, pslvpn.polarsemi.com and click connect



The Cisco client will connect and prompt for your Username and Password then Click OK



If you entered correctly it should look like the following



To disconnect Click the Disconnect button.

Remote Desktop Connection (RDP)

Connect your PSL remote computer

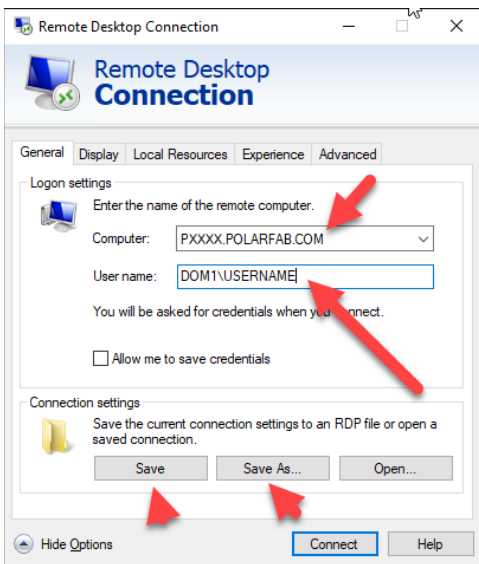
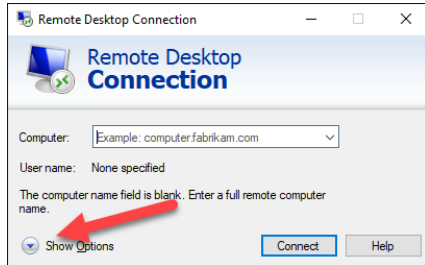
To connect your home computer to your work Computer do the follow steps:

On your home computer, click **Start** menu and then point to **Accessories or Windows Accessories(win 10)** .

In the **Accessories or Windows Accessories(win 10)** menu and then click **Remote Desktop Connection**.

It is a good Idea to Right click and pin to start menu.

Click on Lower left to show options



Enter PC number PXXXX.polarfab.com REPLACE pxxxx with your PC number

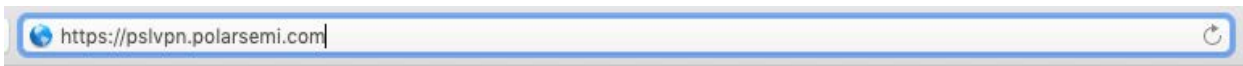
Username: Dom1\username

Click Save -Also a good idea to do a Save as, to save to your Desktop

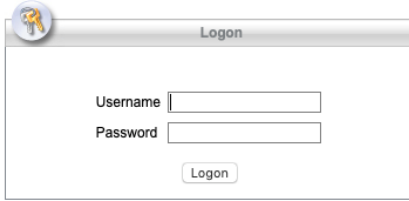
Press to connect to your PSL PC

Polar Semi Cisco VPN for the Mac OS

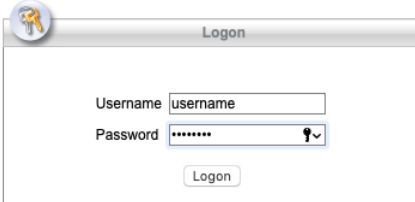
Open Safari and enter **https://pslvpn.polarsemi.com** note it is https://



The Polar Semi Firewall will prompt you to log in



In the Logon box, enter your work's **username** and **password** then click **Logon**



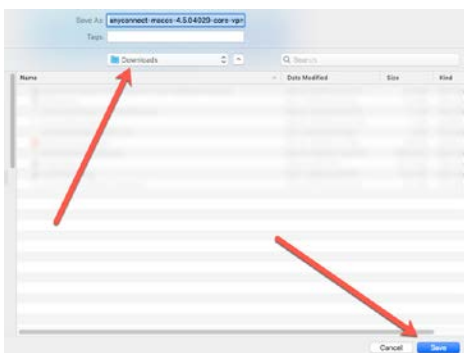
Firewall will attempt to do an auto install, but if will fail and you will have to do a manual download



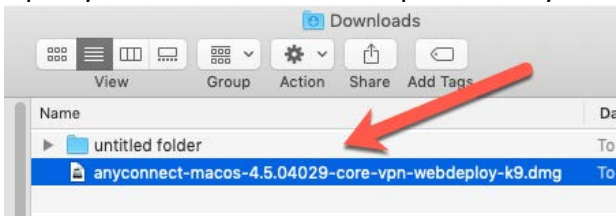
Right Click on the **AnyConnect Link** and select Download Linked File As



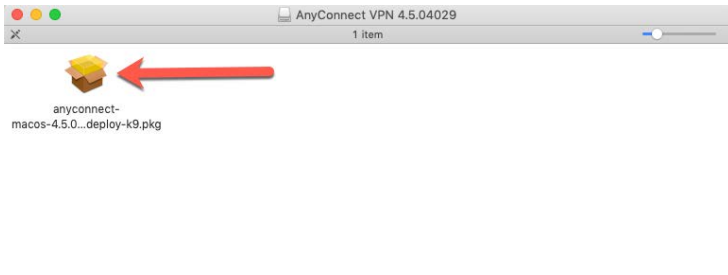
Save the file to your downloads folder



Open your downloads folder open the AnyConnect VPN.dmg file

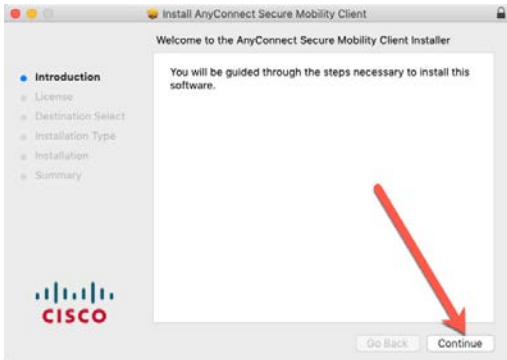


The .dmg will open to display a .pkg file

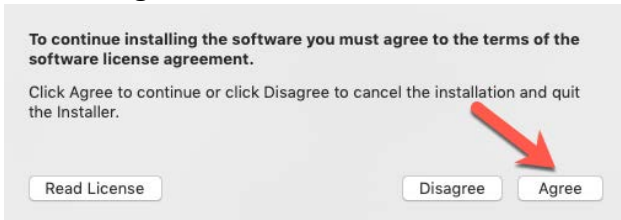


Open the AnyConnect vpn.pkg file

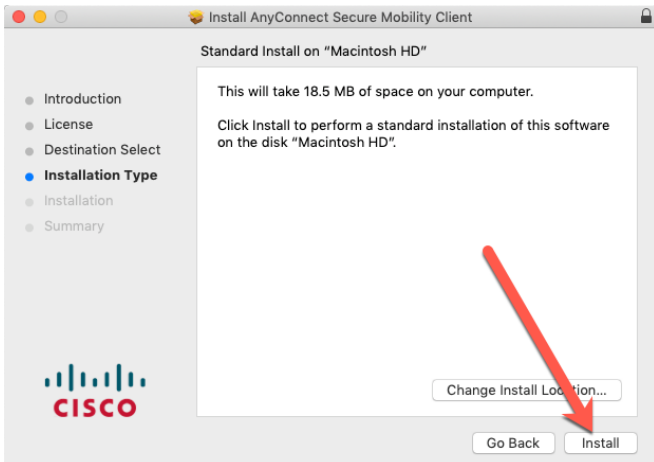
Cisco VPN will start to install click **continue**



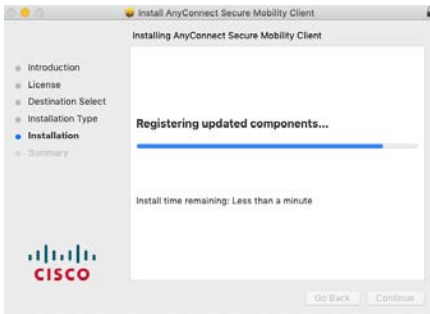
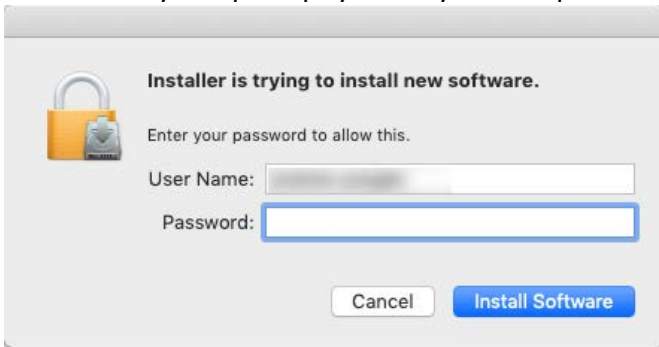
Click on Agree



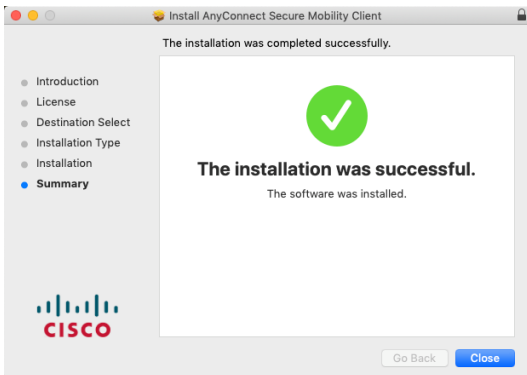
Click Install



Mac Security will prompt you for you Mac password and click Install software



Click Close

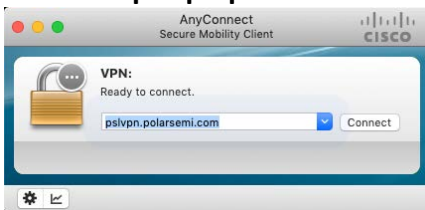


Mac OS may require you to add the VPN software to Trusted apps under System Prefs

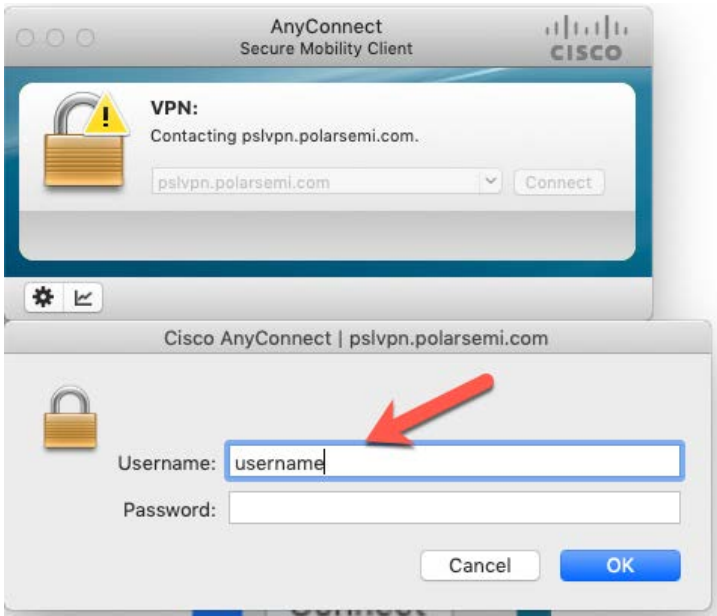
Under Launchpad locate the Cisco VPN open it



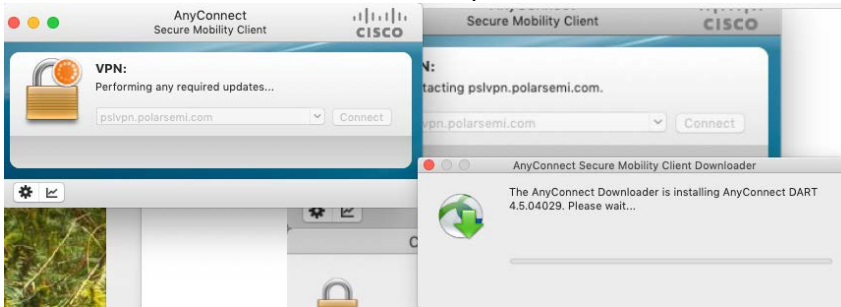
Enter the **pslvpn.polarsemi.com** in the address box and click **Connect**



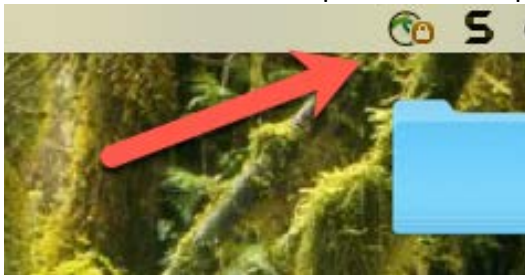
The Cisco client will ask for you PSL **username** and **Password** then Click **OK**



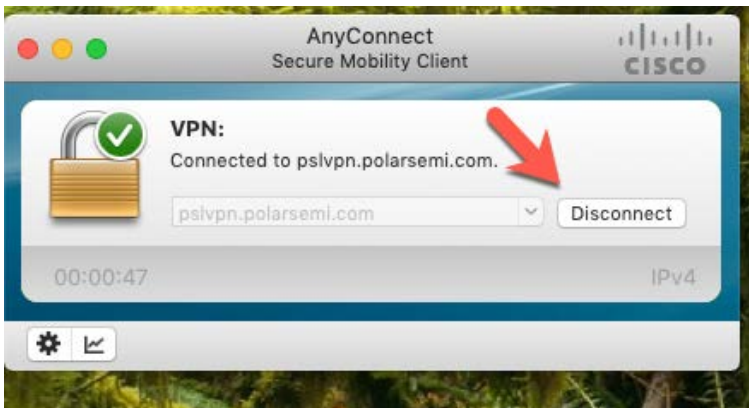
Next the VPN client will download updates



The client Connects and parks in the Top menu Bar



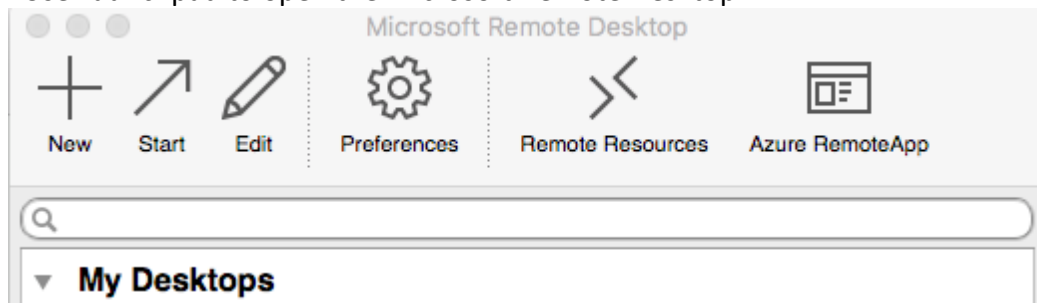
To disconnect Click the Disconnect button



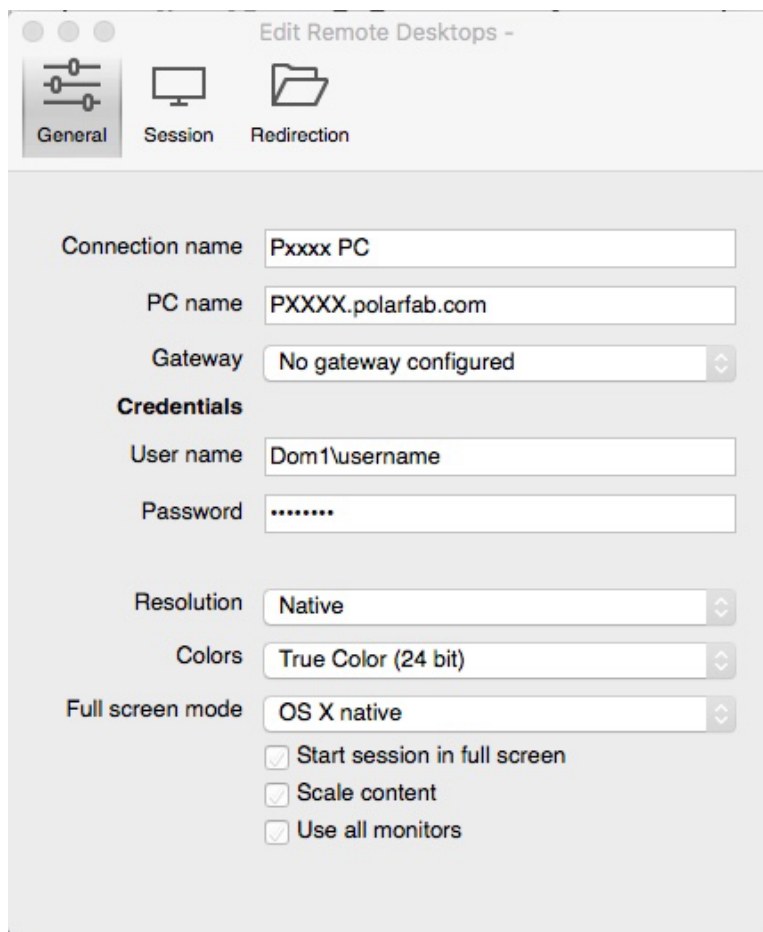
Go to the App Store and get Microsoft RDP

Microsoft Remote Desktop configuration:

Use Launchpad to open the Microsoft Remote Desktop



Click New



Close windows

Connection to PSL